

The InfraCAM Thermal Imager enables the proactive condition monitoring of electrical systems – to detect hot spots, avoid electrical failures, increase safety and even prevent fires.



- > Ultra-compact & Affordable
- > 7 Hour Battery Operating Time
- > Crisp, High-quality Images
- > Bright 3.5" LCD
- > Built-in Laser LocatIRTM
- > JPEG Image Storage
- > Download Images Easily to a PC
- > Easy-to-operate

Find Problems Fast

Monitor and diagnose the condition of electrical system components to detect and address problem areas before the delivery of power is interrupted. Crisp thermal images are clearly displayed on the large 3.5" color LCD – highlighting any anomalies that require attention.

Rugged, Ergonomic & Lightweight

Hold in your hand, clip to your belt or place in your toolbox, the InfraCAM weighs just 1.25 lbs. It is the lightest IR and thermal imaging storage camera in the world. Dust and splash proof, the InfraCAM meets IP 54 standards and withstands harsh industrial environments.

Flexible JPEG Image Storage

Store and recall JPEG images in the camera's on-board memory. Recall, analyze and share your findings with others in the field using the camera's LCD.

Pinpoint Problems with Precision

The built-in Laser LocatIRTM quickly helps you associate the hot spot on the IR image with the real physical target. This feature greatly enhances the ability to target inconsistencies.

View Sensitive Thermal Images

A maintenance-free, state-of-the-art uncooled FPA infrared detector produces highly sensitive thermal images that allow you to detect subtle temperature variations that can signal faults in electrical components.

Download and Document

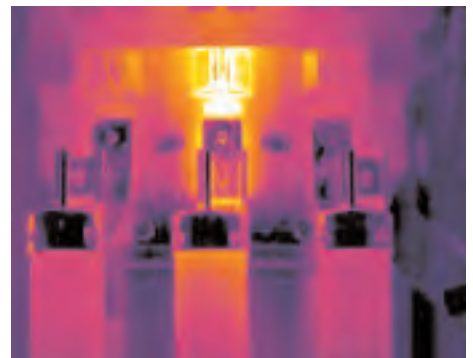
Download thermal images to your PC quickly with QuickViewTM software and standard USB cables. Document your findings simply by inserting JPEGs into your favorite word processing programs.

Smart Power Management

Lightweight, long life Li-Ion battery assures uninterrupted inspections for up to 7 hours on a single charge. InfraCAM includes an internal battery charger and one battery. Optional car/truck charger and additional batteries are available.

Fast Detection for Fast Action

Quickly and easily scan entire electrical systems – inspect areas that can't be easily reached with thermocouples or other contact-based tools. Instantly detect and document faulty connections, fuses, circuit breakers, wiring and other electrical components for immediate repair – enhancing productivity and safety and averting unscheduled system shutdowns.



Infrared can accurately and quickly locate faults before failures, shutdowns, or even fires occur.

InfraCAM™ Technical Specifications

Imaging Performance	
Field of view/min focus distance	Fixed 25° x 25°/0.3m
Thermal sensitivity (N.E.T.D)	< 0.20° C at 25° C
Detector type	Focal plane array (FPA) uncooled microbolometer; 120 x 120 pixels
Spectral range	7.5 to 13 μ m
Image Presentation	
Display	3.5" color LCD, 240 x 240 pixels
Video output	MPEG-4 over USB
Image controls	Palettes (color, B/W), level, span, auto adjust (continuous/manual)
Set-up controls	Date/time, language (English, Spanish), info, LCD intensity (high/normal/low), power down
Temperature range	-10° C to +350° C (+14° F to +662° F)
Image Storage	
Digital storage functions	Store, Delete all images, Delete image, Open
Image storage	JPEG Images
Laser LocatIR	
Classification	Class 2
Type	Semiconductor AlGaInP Diode Laser: 1mW/635 nm (red)
Power Source	
Battery type	Li-Ion
Battery operating time	7 hours. Display shows battery status
Charging system	In camera, AC adapter or 12V from car with optional 12V cable.
AC operation	AC adapter 90-360 VAC, 50/60 Hz / 12VDC out
Voltage	11-16 VDC
Power saving	Automatic shutdown (user-selectable)
Environmental	
Operating temperature range	-15° C to +50° C (+5° F to 122° F)
Storage temperature range	-20° C to +70° C (-4° F to 158° F)
Humidity	Operating and storage 20% to 80%, non-condensing, IEC 359
Water and dust resistant (encapsulation)	IP 54
Shock	25G, IEC 68-2-29
Vibration	2G, IEC 68-2-6
Physical Characteristics	
Weight	<1.25 lbs. (0.55kg), including battery
Size (L x W x H)	243mm x 81mm x 103mm (9.6" x 3.2" x 4.1")
Color	Red
Tripod Mounting	Standard, 1/4" - 20
Interfaces	
USB	Image transfer to PC
Measurement	
Measurement modes	Spot temperature measurement

InfraCAM System Includes:
IR camera with lens and built-in Laser LocatIR™
Ruggedized transport case
Power supply
Hand strap
Lens cap
QuickView™ software
USB cable
User manual
Power cord
1 Battery
Training CD

For more information call:
Go To Infrared - 801-393-6050

